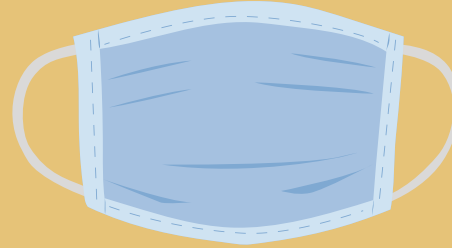


**WORK
SMART
WORK
HEALTHY**

MINNESOTA GUIDELINES FOR FACE COVERINGS AT WORK



WORKERS MUST WEAR A FACE COVERING:

- In an indoor business or public indoor space, including office spaces.
- When working outdoors where social distancing cannot be maintained.
- When entering another person's living unit for a business purpose.

WORKERS MAY REMOVE A FACE COVERING:

- When alone in an office, a vehicle, the cab of heavy equipment or machinery, or an enclosed work area. In such situations, the worker should carry a face covering to be prepared for person-to-person interactions.
- Where wearing a face covering would create a job hazard.

IF WORKERS CANNOT WEAR A FACE COVERING:

- If workers are unable to wear face-coverings due to a medical/physical limitation, or mental health condition, alternative protections must be provided.

THE USE OF A FACE COVERING IS NOT A SUBSTITUTE FOR:

- Social distancing where social distancing can be achieved and maintained.
- Necessary Personal Protected Equipment (PPE).