

About:

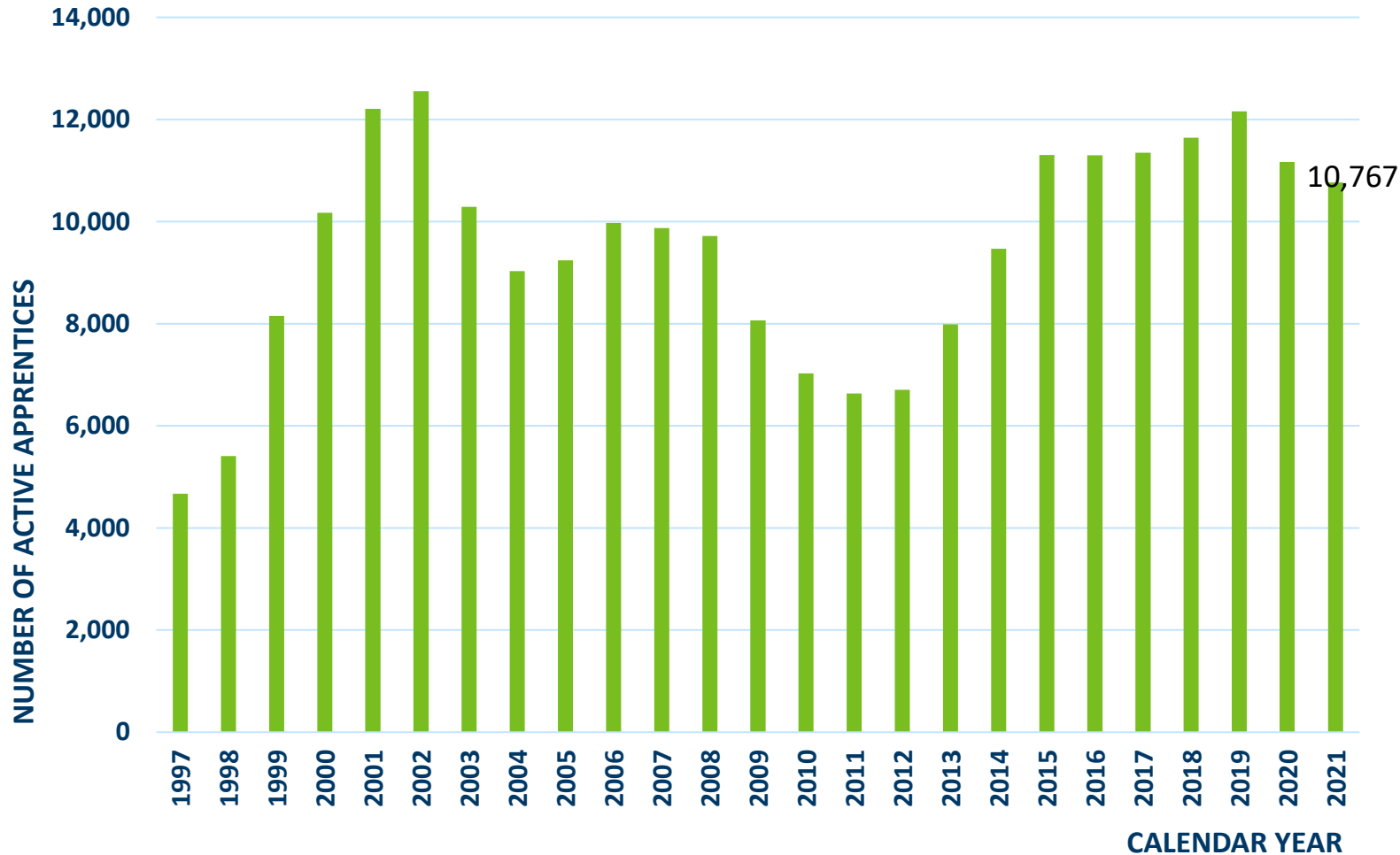
Founded:	1939
Annual Operating Budget:	\$1.271M
Annual Grant Distribution:	\$100K
Staff:	11
Advisory Board:	9 Members

Statistical Snapshot:

Active Sponsors:	193
Active Employers:	Over 2,300
Active Apprentices – Construction:	9,434
Active Apprentices – Overall:	10,767
<i>People Of Color</i>	20.16%
<i>Women</i>	7.2%
<i>Veteran</i>	7.0%
Completions (CY2020):	1,581

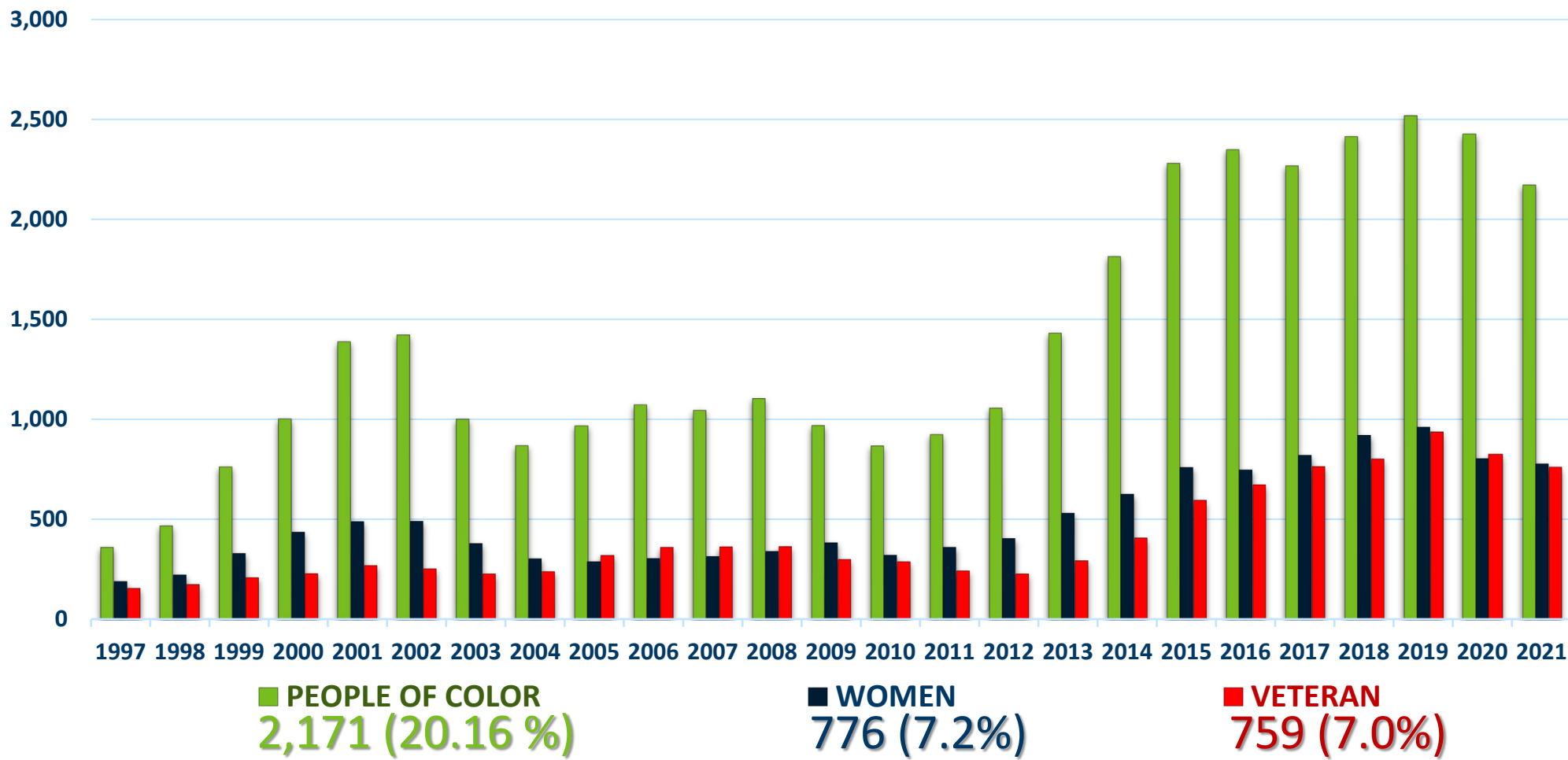


Number of active apprentices training in Minnesota



Apprentice participation demographic trends

Calendar year



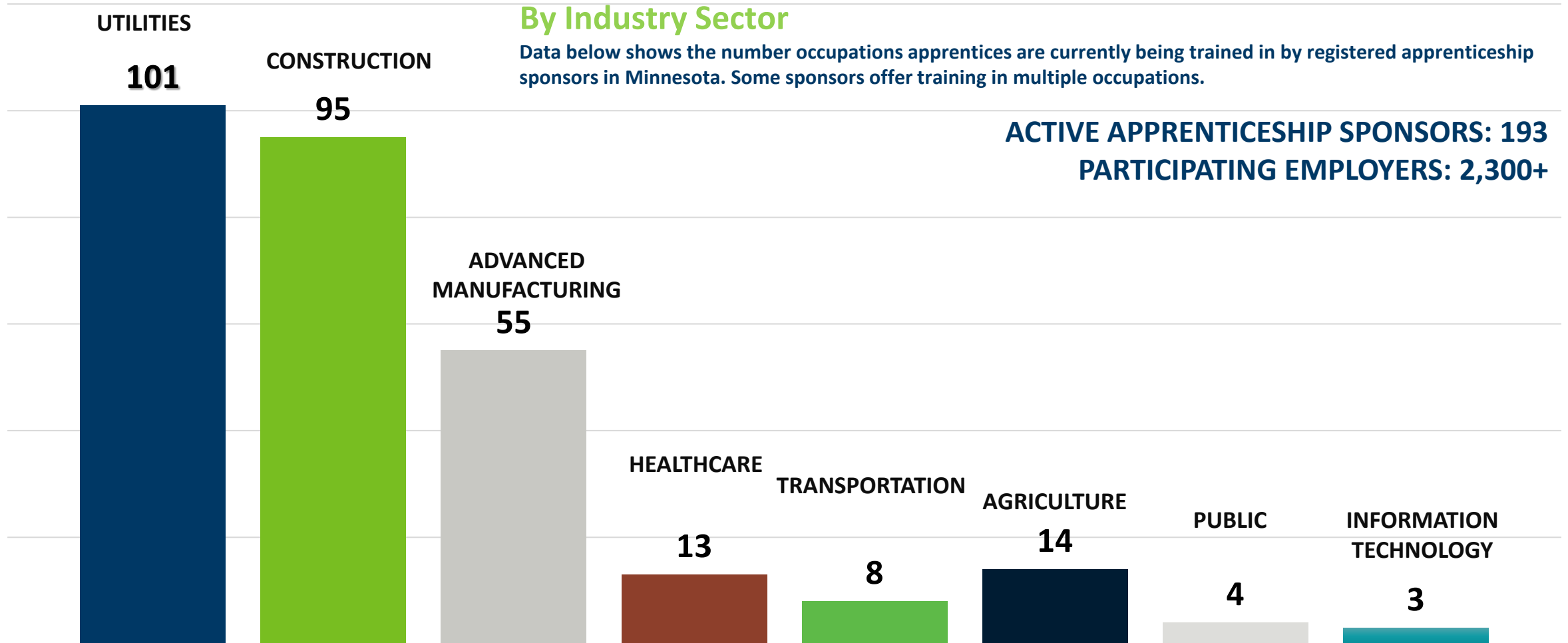
NUMBER OF TRADES & OCCUPATIONS ACTIVE IN MINNESOTA REGISTERED APPRENTICESHIP

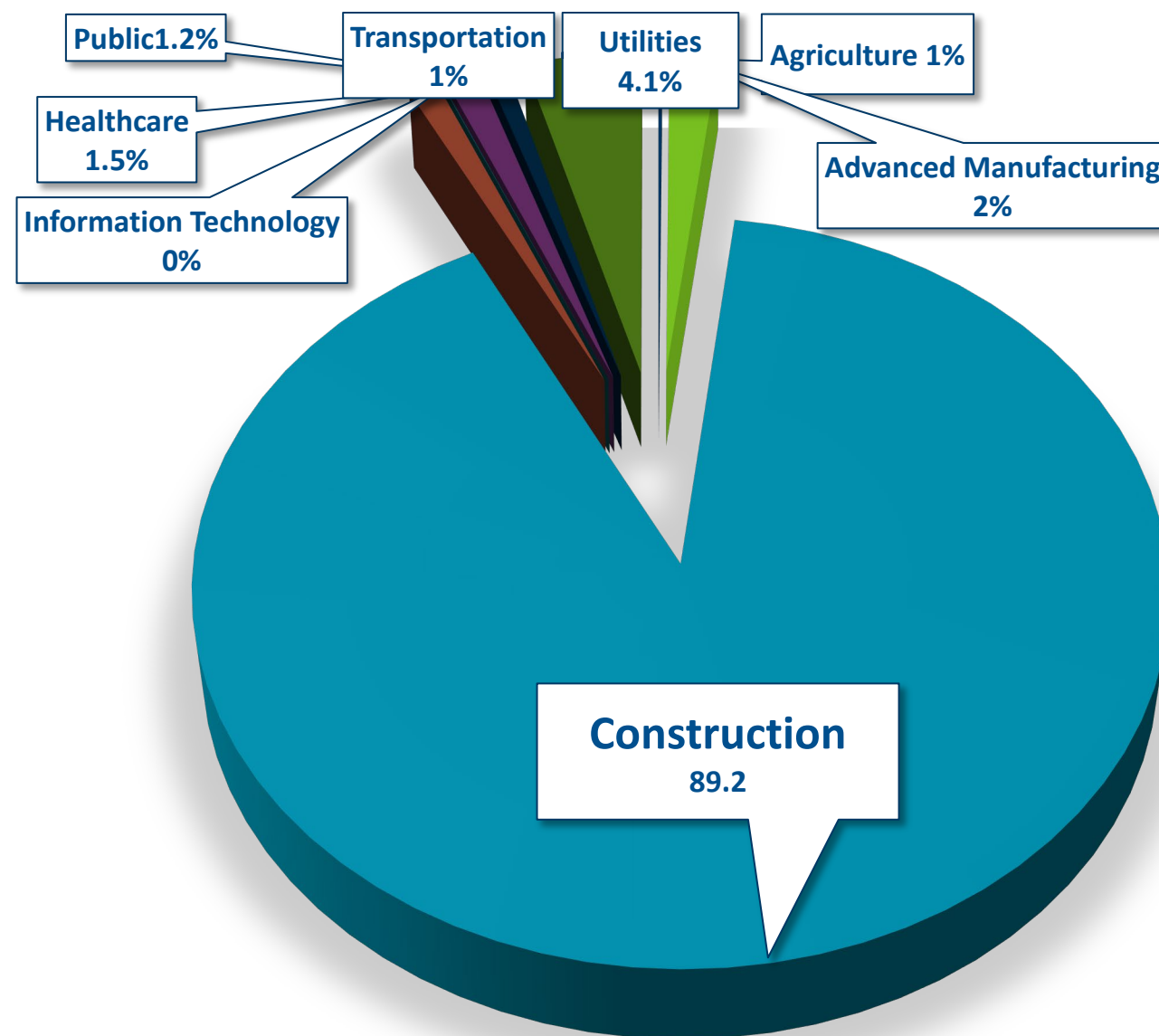
By Industry Sector

Data below shows the number occupations apprentices are currently being trained in by registered apprenticeship sponsors in Minnesota. Some sponsors offer training in multiple occupations.

ACTIVE APPRENTICESHIP SPONSORS: 193

PARTICIPATING EMPLOYERS: 2,300+



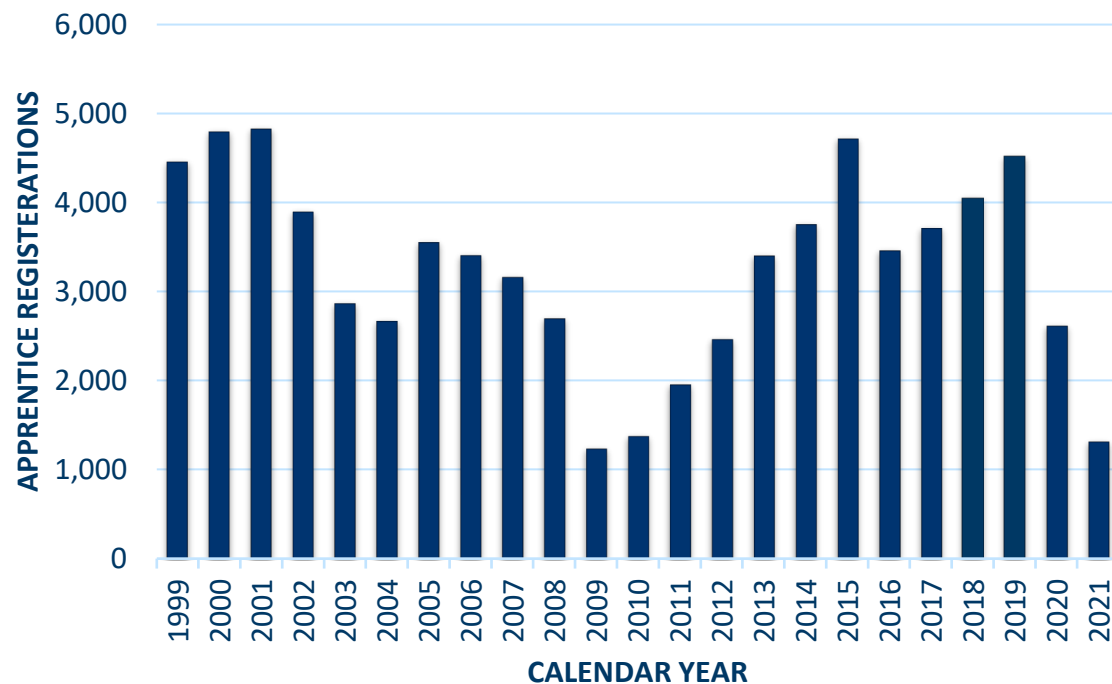


Percentage of total active apprentices by industry

- Agriculture
- Advanced Manufacturing
- Construction
- Healthcare
- Information Technology
- Public
- Transportation
- Utilities

Apprentice registrations

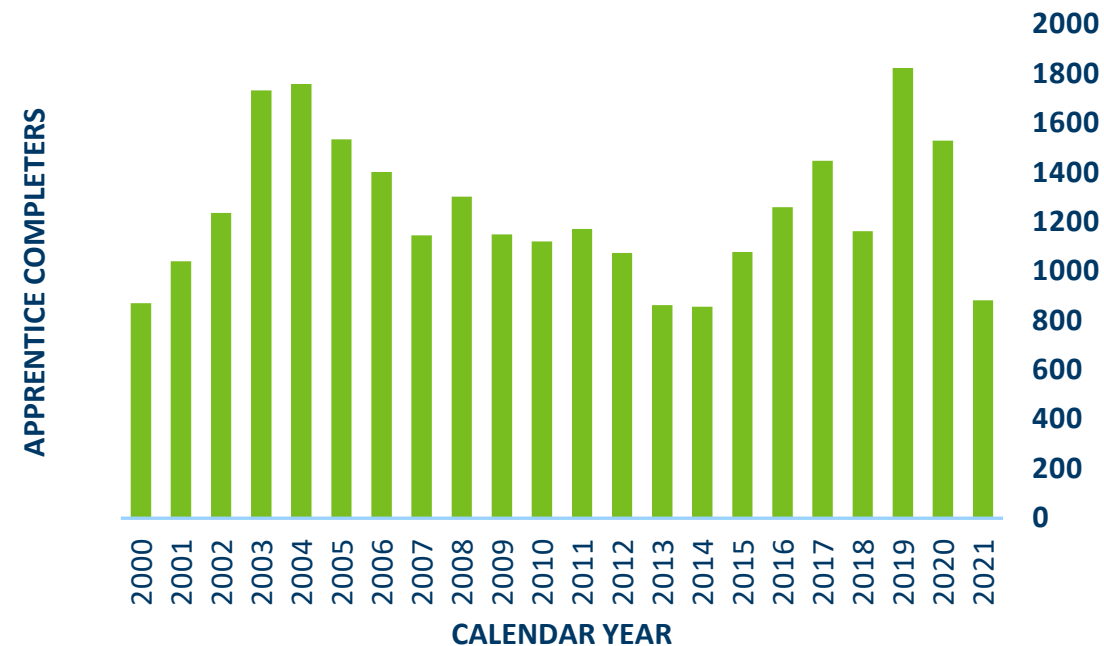
Calendar year



***1,317**
Registrations
01/2021 – 06/2021

Apprentice completions

Calendar year

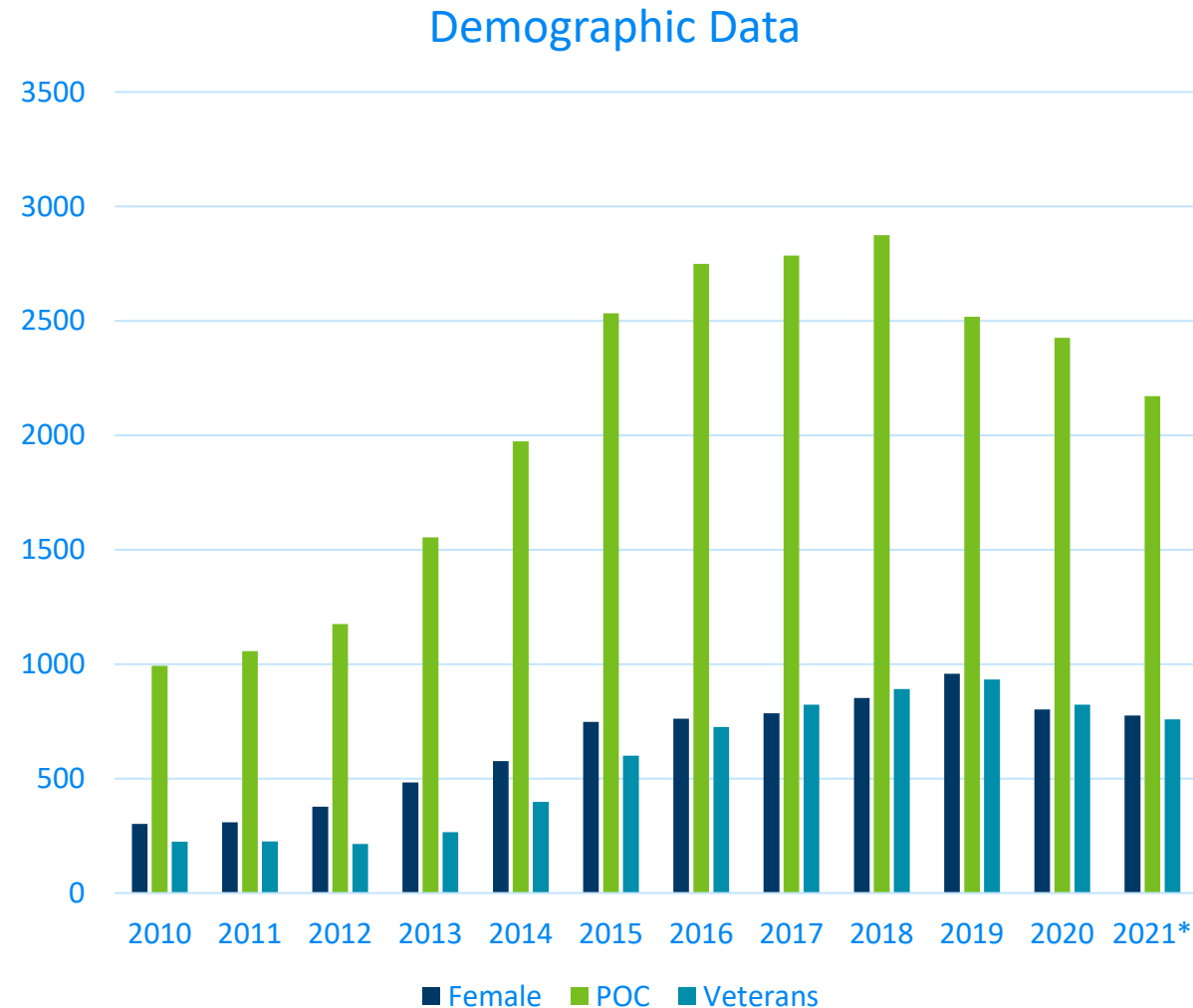


***882**
Completions
01/2021 – 06/2021

Number of active apprentices – year by year comparison

Year	Female	People of Color	Veteran	Total active
2010	302	993	225	7,844
2011	309	1,058	226	7,537
2012	378	1,176	215	7,752
2013	483	1,555	266	8,702
2014	577	1,973	399	10,260
2015	748	2,533	601	12,568
2016	762	2,749	726	13,067
2017	786	2,786	823	13,204
2018	853	2,874	891	13,604
2019	958	2,518	934	12,160
2020	803	2,426	824	11,168
2021*	776	2,171	759	10,767

* Status Reported through June 30, 2021



Union-Affiliated Construction Apprenticeship Statistical Snapshot

Starts, completions and demographic trends for union construction apprenticeship programs

*Status reported through June 30, 2021

Year	Starts	Completions
2010	1,115	924
2011	1,680	950
2012	2,194	867
2013	3,083	692
2014	3,382	667
2015	4,364	852
2016	3,083	1,038
2017	3,219	1,243
2018	3,331	1,356
2019	3,829	1,400
2020	2,164	1,198
2021*	1,260	771

Starts/Completion Data

